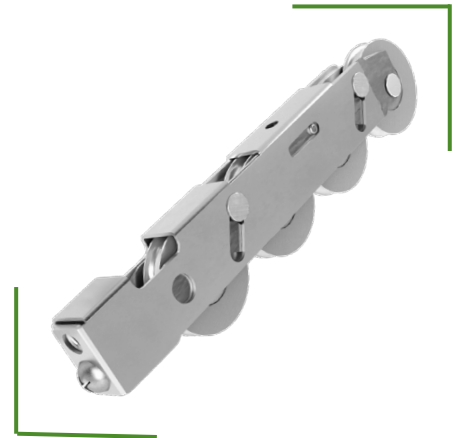


## End Adjust Quad Roller Low Profile

### Rollers

The 1976 quad roller is designed to provide easy and smooth gliding of large sliding doors with narrow sight lines. These rollers contain 1.50-inch diameter precision bearing wheels that will easily carry panels weighing up to 1,200 pounds. Available in both steel and stainless steel, they fit into profile channels as small as 1.03 inches tall by .68 inches wide and will provide vertical adjustment of up to .42 inches. Pair them with contemporary style handles and multipoint locks for an updated, premium door package.



### AVAILABLE COLORS



Stainless  
Steel



Steel



### PRODUCT HIGHLIGHTS

- Recommended for: aluminum, composite, and vinyl sliding doors
- Smooth and easy operation with weights of up to 1,200 pounds
- Stainless steel option maximizes corrosion resistance
- Perfect for large doors with narrow site lines
- Small envelope size: 1.03" X .86"
- Available adjustment of .42"
- Recommended mounting screws. 1-1/4 -20 pan head machine screw